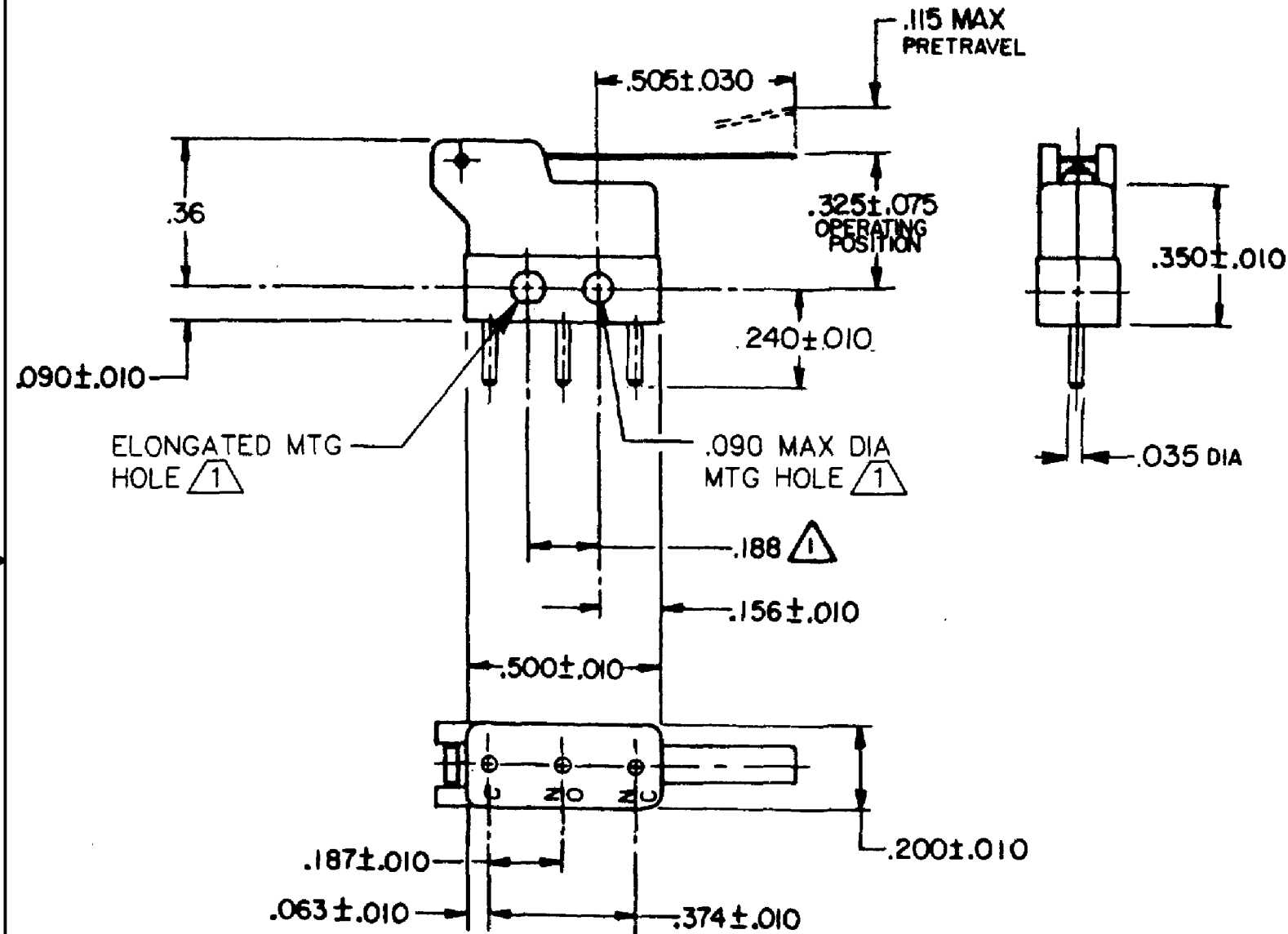
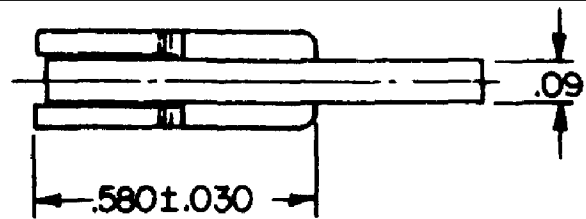


HONEYWELL PART NUMBER
311SX2-H33
PRODUCT CODE VDS0013

REV	DOCUMENT	CHANGED BY	CHECK
6	0038558	SS 08MAY08	BLR



NOTES

- 1 MOUNTING HOLES WILL ACCEPT PINS OR SCREWS OF .087. MAX DIA ON .188 ± .002 CENTERS
- 2 - TERMINALS ARE PLATED FOR SOLDERING
- 3 - SWITCH WILL WITHSTAND TEMPERATURE OF 250°F

RELEASE NO. PR-15908

REPLACES

CHARACTERISTICS	
OPERATING FORCE	-- --30 GRAM MAX
RELEASE FORCE	-- -- 5 GRAM MIN
DIFFERENTIAL TRAVEL	-- .035 MAX
OVERTRAVEL	-- -- .025 MIN

ELECTRICAL DATA			
CONTACT ARRANGEMENT SPDT			
	28 VOLTS DC RATING		115 VOLTS AC, 60 CPS
	SEA LEVEL	50,000 FT	SEA LEVEL
INDUCTIVE	3 AMP	2 AMP	5 AMP
RESISTIVE	5 AMP	4 AMP	5 AMP

DESIGN UNITS: INCH	
TOLERANCES UNLESS NOTED:	
NO PLACE	X ±
ONE PLACE	.X ±
TWO PLACE	.XX ±
THREE PLACE	.XXX ±
FOUR PLACE	.XXXX ±
ANGLES	±

DRAWN	SPK	25FEB08
CHECK	RJ	25FEB08
THIS DRAWING COVERS A PROPRIETARY ITEM AND IS THE PROPERTY OF HONEYWELL. THIS DRAWING IS NOT TO BE COPIED OR USED WITHOUT THE PERMISSION OF HONEYWELL.		
INTERPRET PER ANSI Y14.5M-1982 OTHER HONEYWELL ENGINEERING STANDARDS MAY APPLY		

Honeywell			
TITLE SWITCH - BASIC			
SIZE	TYPE	DRAWING NAME	REV
B	I	311SX2-H33	6

APPROVALS	KEMA, CE	5A 250 V - T125	5E4	CE
	UL, CSA	5A 250 VAC	UL	BRAND L4L

THIRD ANGLE PROJECTION

RASTER

SCALE - WEIGHT: SHEET 1 OF 1